

M

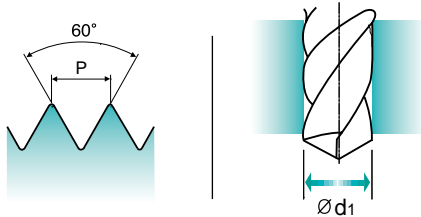
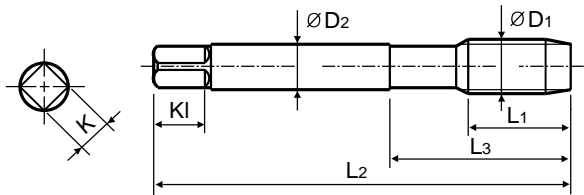
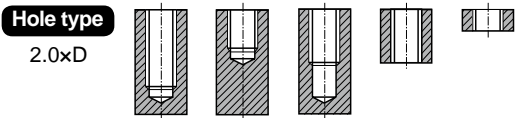
ISO metric coarse threads DIN 13

- Metrisches ISO-Gewinde DIN 13
- ISO MÉTRIQUE DIN13
- ISO Metrico passo grosso DIN 13

- This tap is a serial hand tap in set, First, Second and Bottoming.
- Bottoming tap of set has final internal thread dimensions only.



- Dies ist ein Handgewindebohrer im Satz mit Vor-, Mittel- und Fertigschneider.
- Nur der Fertigschneider kann das gewünschte Gewinde schneiden



Sets of taps

Gewindebohrer -Satz

Unit : mm

SIZE	Pitch	EDP No.	Thread Length	Overall Length	Neck Length	Shank Diameter	Square Size	Square Length	No. of Flute	Tapping Drill Diameter
ØD1	P	Bright	L1	L2	L3	ØD2	K	KI	Z	Ød1
M2	× 0.4	T7109139	8	36	13	2.8	2.1	5	3	1.6
M2.2	× 0.45	T7109159	9	36	13	2.8	2.1	5	3	1.75
*M2.3	× 0.4	T7109199	9	36	13	2.8	2.1	5	3	1.9
M2.5	× 0.45	T7109179	9	40	15	2.8	2.1	5	3	2.05
*M2.6	× 0.45	T7109499	9	40	15	2.8	2.1	5	3	2.1
M3	× 0.5	T7109209	11	40	18	3.5	2.7	6	3	2.5
M3.5	× 0.6	T7109229	13	45	21	4	3	6	3	2.9
M4	× 0.7	T7109249	13	45	21	4.5	3.4	6	3	3.3
M4.5	× 0.75	T7109269	16	50	25	6	4.9	8	3	3.7
M5	× 0.8	T7109289	16	52	26	6	4.9	8	3	4.2
M5.5	× 0.9	T7109N69	18	56	27	6	4.9	8	3	4.6
M6	× 1	T7109319	18	56	27	6	4.9	8	3	5
M7	× 1	T7109349	18	56	28.5	6	4.9	8	3	6
M8	× 1.25	T7109369	20	63	34	6	4.9	8	3	6.8
M9	× 1.25	T7109399	20	63	34	7	5.5	8	4	7.8
M10	× 1.5	T7109429	22	70	38	7	5.5	8	4	8.5
M11	× 1.5	T7109469	22	70	38	8	6.2	9	4	9.5
M12	× 1.75	T7109509	24	80	45	9	7	10	4	10.2
M14	× 2	T7109549	26	80	45	11	9	12	4	12
M16	× 2	T7109609	27	80	45	12	9	12	4	14
M18	× 2.5	T7109659	30	95	58	14	11	14	4	15.5
M20	× 2.5	T7109709	32	95	58	16	12	15	4	17.5

►\*DIN profile not ISO

► NEXT PAGE

◎ : Excellent ○ : Good

ISO	P										M				K						
Material Description	Non-alloy steel					Low alloy steel				High alloyed steel, and tool steel		Stainless steel			Grey cast iron		Nodular cast iron		Malleable cast iron		
VDI 3323	1	2	3	4	5	6	7	8	9	10	11	12	13	14	15	16	17	18	19	20	
HRC		13	25	28	32	10	29	32	38	15	35	15	23	10	10	26	3	25		21	
HB	125	190	250	270	300	180	275	300	350	200	325	200	240	180	180	260	160	250	130	230	
Recommended	○	○	○	○		○	○										○	○			
ISO	N										S							H			
Material Description	Aluminum-wrought alloy		Aluminum-cast, alloyed			Copper and Copper Alloys (Bronze / Brass)			Non Metallic Materials		Heat Resistant Super Alloys					Titanium Alloys		Hardened steel		Chilled Cast Iron	
VDI 3323	21	22	23	24	25	26	27	28	29	30	31	32	33	34	35	36	37	38	39	40	
HRC											15	30	25	38	34			55	60	42	
HB	60	100	75	90	130	110	90	100			200	280	250	350	320	400Rm	1050Rm	550	630	400	
Recommended					○	○	○														



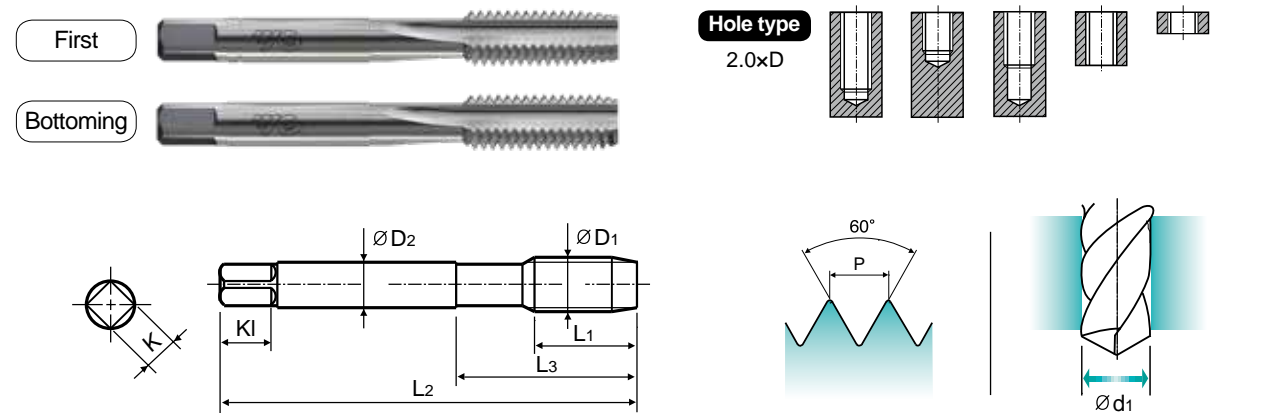

**YG TAP  
GENERAL**

**T7309** SERIES

**MF** **ISO metric fine threads DIN 13**  
 🇩🇪 Metrisches ISO-Gewinde DIN 13  
 🇫🇷 ISO MÉTRIQUE PAS FINS DIN13  
 🇮🇹 ISO Metrico passo fine DIN 13

- ▶ This tap is a serial hand tap in set. First and Bottoming.
- ▶ Bottoming tap of set has final internal thread dimensions only.

- ▶ Handgewindebohrersatz mit Vor- und Fertigschneider.
- ▶ Nur der Fertigschneider kann das gewünschte Gewinde schneiden.



Material groups **GS** HSS DIN 2181 6H 60° I / III Bright

Sets of taps  
Gewindebohrer-Satz

Unit : mm

SIZE	Pitch	EDP No.	Thread Length	Overall Length	Neck Length	Shank Diameter	Square Size	Square Length	No. of Flute	Tapping Drill Diameter
ØD1	P	Bright	L1	L2	L3	ØD2	K	Kl	Z	Ød1
M3	× 0.35	T7309219	9	40	18	3.5	2.7	6	3	2.65
M4	× 0.5	T7309259	10	45	18	4.5	3.4	6	3	3.5
M5	× 0.5	T7309299	13	52	22	6	4.9	8	3	4.5
M6	× 0.75	T7309329	14	56	24	6	4.9	8	3	5.2
M6	× 0.5	T7309339	13	56	24	6	4.9	8	3	5.5
M7	× 0.75	T7309359	14	56	27	6	4.9	8	3	6.2
M8	× 1	T7309379	17	63	27	6	4.9	8	3	7
M8	× 0.75	T7309389	14	63	27	6	4.9	8	3	7.2
M8	× 0.5	T7309939	14	63	27	6	4.9	8	3	7.5
M9	× 1	T7309409	17	63	27	7	5.5	8	4	8
M10	× 1.25	T7309439	22	70	32	7	5.5	8	4	8.8
M10	× 1	T7309449	18	63	27	7	5.5	8	4	9
M10	× 0.75	T7309459	18	63	27	7	5.5	8	4	9.2
M11	× 1	T7309479	18	63	27	8	6.2	9	4	10
M12	× 1.5	T7309519	20	70	32	9	7	10	4	10.5
M12	× 1.25	T7309529	20	70	32	9	7	10	4	10.8
M12	× 1	T7309539	18	70	32	9	7	10	4	11
M13	× 1.5	T7309N19	20	70	32	11	9	12	4	11.5
M13	× 1	T7309N29	18	70	32	11	9	12	4	12
M14	× 1.5	T7309559	20	70	32	11	9	12	4	12.5
M14	× 1.25	T7309569	20	70	32	11	9	12	4	12.8
M14	× 1	T7309579	18	70	32	11	9	12	4	13
M15	× 1.5	T7309589	20	70	32	12	9	12	4	13.5
M15	× 1	T7309599	18	70	32	12	9	12	4	14
M16	× 1.5	T7309619	20	70	32	12	9	12	4	14.5

▶ NEXT PAGE

[illegible]




**YG TAP  
GENERAL**

**T7309** SERIES

**MF** **ISO metric fine threads DIN 13**  
 🇩🇪 Metrisches ISO-Feingewinde DIN 13  
 🇫🇷 ISO MÉTRIQUE PAS FINS DIN13  
 🇮🇹 ISO Metrico passo fine DIN 13

- ▶ This tap is a serial hand tap in set. First and Bottoming.
- ▶ Bottoming tap of set has final internal thread dimensions only.

- ▶ Handgewindebohrersatz mit Vor- und Fertigschneider.
- ▶ Nur der Fertigschneider kann das gewünschte Gewinde schneiden

Technical drawing of a screw thread. The leftmost part is a circular cross-section showing the thread profile with a diameter dimension  $\varnothing D_2$  and a length dimension  $K$ . The middle part is a side view of the screw with dimensions  $\varnothing D_2$ ,  $\varnothing D_1$ ,  $L_1$ ,  $L_2$ ,  $L_3$ , and  $K$ . The rightmost part shows a detailed view of the thread profile with a 60° angle and a pitch dimension  $P$ , and a cross-section of the thread with a diameter dimension  $\varnothing d_1$ .

Material groups **GS** HSS DIN 2181 6H 60° I/III Bright

Sets of taps  
Gewindebohrer-Satz

Unit : mm										
SIZE	Pitch	EDP No.	Thread Length	Overall Length	Neck Length	Shank Diameter	Square Size	Square Length	No. of Flute	Tapping Drill Diameter
ØD <sub>1</sub>	P	Bright	L <sub>1</sub>	L <sub>2</sub>	L <sub>3</sub>	ØD <sub>2</sub>	K	KI	Z	Ød <sub>1</sub>
M16 × 1		T7309629	18	70	32	12	9	12	4	15
M18 × 2		T7309669	22	80	35	14	11	14	4	16
M18 × 1.5		T7309679	22	80	35	14	11	14	4	16.5
M18 × 1		T7309689	18	80	35	14	11	14	4	17
M20 × 2		T7309719	22	80	35	16	12	15	4	18
M20 × 1.5		T7309729	22	80	35	16	12	15	4	18.5
M20 × 1		T7309739	18	80	35	16	12	15	4	19
M22 × 2		T7309759	22	80	35	18	14.5	17	4	20
M22 × 1.5		T7309769	22	80	35	18	14.5	17	4	20.5
M22 × 1		T7309779	18	80	35	18	14.5	17	4	21
M24 × 2		T7309799	22	90	40	18	14.5	17	4	22
M24 × 1.5		T7309809	22	90	40	18	14.5	17	4	22.5
M24 × 1		T7309819	18	90	40	18	14.5	17	4	23
M25 × 1.5		T7309839	22	90	40	18	14.5	17	4	23.5
M25 × 1		T7309849	18	90	40	18	14.5	17	4	24
M26 × 1.5		T7309859	22	90	40	18	14.5	17	4	24.5
M26 × 1		T7309N59	18	90	40	18	14.5	17	4	25
M27 × 2		T7309879	22	90	40	20	16	19	4	25
M27 × 1.5		T7309889	22	90	40	20	16	19	4	25.5
M27 × 1		T7309899	18	90	40	20	16	19	4	26
M28 × 2		T7309909	22	90	40	20	16	19	4	26
M28 × 1.5		T7309919	22	90	40	20	16	19	4	26.5
M30 × 2		T7309969	22	90	40	22	18	21	4	28
M30 × 1.5		T7309979	22	90	40	22	18	21	4	28.5
M30 × 1		T7309989	18	90	40	22	18	21	4	29

◎ : Excellent   ○ : Good

[illegible]



**YG TAP**

**GENERAL**

**T7363** SERIES

**UNC** Unified coarse threads  
 🇩🇪 Unified Grobgewinde  
 🇫🇷 UNC  
 🇮🇹 Unificato passo grosso

► This tap is a serial hand tap in set, First, Second and Bottoming.  
► Bottoming tap of set has final internal thread dimensions only.

First

Second

Hole type  
2.0xD

Nur der Fertigschneider kann das gewünschte Gewinde schneiden

Unit : mm										
SIZE	TPI	EDP No.	Thread Length	Overall Length	Neck Length	Shank Diameter	Square Size	Square Length	No. of Flute	Tapping Drill Diameter
ØD <sub>1</sub>		Bright	L <sub>1</sub>	L <sub>2</sub>	L <sub>3</sub>	ØD <sub>2</sub>	K	KI	Z	Ød <sub>1</sub>
#2 - 56UNC		T7363089	9	36	13	2.8	2.1	5	3	1.8
#3 - 48UNC		T7363129	10	40	15	2.8	2.1	5	3	2.1
#4 - 40UNC		T7363169	10	42	18	3.5	2.7	6	3	2.3
#5 - 40UNC		T7363209	10	42	18	3.5	2.7	6	3	2.6
#6 - 32UNC		T7363249	11	45	18	4	3	6	3	2.85
#8 - 32UNC		T7363289	12	48	23	4.5	3.4	6	3	3.5
#10 - 24UNC		T7363329	14	52	26	6	4.9	6	3	3.9
#12 - 24UNC		T7363369	16	56	27	6	4.9	8	3	4.5
1/4 - 20UNC		T7363409	16	56	27	6	4.9	8	3	5.2
5/16 - 18UNC		T7363449	20	63	34	6	4.9	8	3	6.6
3/8 - 16UNC		T7363489	22	70	38	7	5.5	8	4	8
7/16 - 14UNC		T7363529	22	70	38	8	6.2	9	4	9.4
1/2 - 13UNC		T7363569	25	80	45	9	7	10	4	10.75
9/16 - 12UNC		T7363609	26	80	45	11	9	12	4	12.25
5/8 - 11UNC		T7363649	27	90	55	12	9	12	4	13.5
3/4 - 10UNC		T7363709	32	105	65	14	11	14	4	16.5
7/8 - 9UNC		T7363749	32	110	69	18	14.5	17	4	19.5
1 - 8UNC		T7363789	36	110	69	20	16	19	4	22.25
1-1/8 - 7UNC		T7363829	40	125	77	22	18	21	4	25
1-1/4 - 7UNC		T7363869	40	125	77	25	20	23	4	28.25
1-1/8 - 6UNC		T7363909	50	150	88	28	22	25	4	30.75
1-1/2 - 6UNC		T7363949	50	150	88	32	24	27	4	34
1-3/4 - 5UNC		T7363B89	58	160	93	36	29	32	4	39.5
2 - 4½UNC		T7363D29	65	180	102	40	32	35	4	45.25

◎: Excellent ○: Good

[illegible]

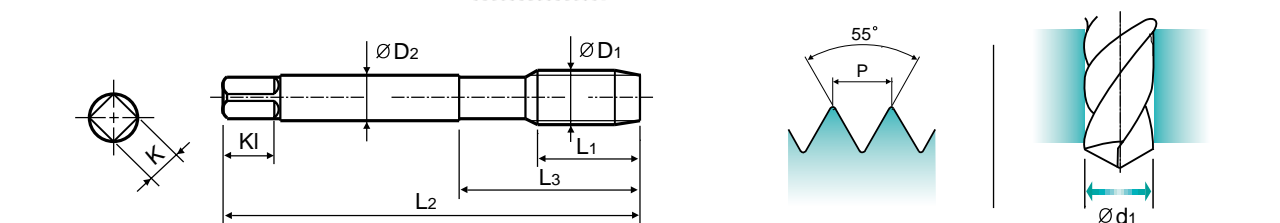
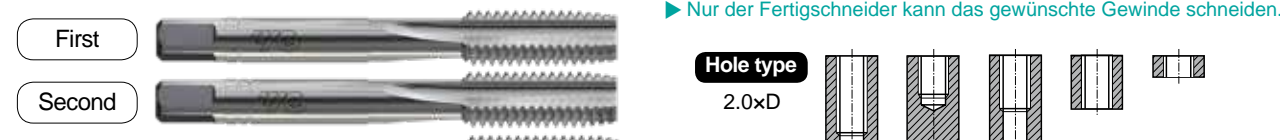



**YG TAP  
GENERAL**

**T7609** SERIES

**BSW** Whitworth threads  
 🇩🇪 Whitworth Gewinde  
 🇧🇪 BSW  
 🇮🇹 Filettatura Whitworth

- ▶ Handgewindebohrersatz mit Vor- und Fertigschneider.
- ▶ Nur der Fertigschneider kann das gewünschte Gewinde schneiden.



										Unit : mm
SIZE	TPI	EDP No.	Thread Length	Overall Length	Neck Length	Shank Diameter	Square Size	Square Length	No. of Flute	Tapping Drill Diameter
ØD <sub>1</sub>		Bright	L <sub>1</sub>	L <sub>2</sub>	L <sub>3</sub>	ØD <sub>2</sub>	K	KI	Z	Ød <sub>1</sub>
W3/32 - 48		T7609129	10	40	15	2.8	2.1	5	3	1.8
W1/8 - 40		T7609209	10	42	18	3.5	2.7	6	3	2.5
W5/32 - 32		T7609289	12	48	23	4.5	3.4	6	3	3.1
W3/16 - 24		T7609329	14	52	26	6	4.9	8	3	3.6
W7/32 - 24		T7609369	16	56	27	6	4.9	8	3	4.4
W1/4 - 20		T7609409	16	56	27	6	4.9	8	3	5.1
W5/16 - 18		T7609449	20	63	34	6	4.9	8	3	6.5
W3/8 - 16		T7609489	22	70	38	7	5.5	8	4	7.9
W7/16 - 14		T7609529	22	70	38	8	6.2	9	4	9.3
W1/2 - 12		T7609569	25	80	45	9	7	10	4	10.5
W9/16 - 12		T7609609	26	80	45	11	9	12	4	12
W5/8 - 11		T7609649	27	90	55	12	9	12	4	13.5
W3/4 - 10		T7609709	32	105	65	14	11	14	4	16.5
W7/8 - 9		T7609749	32	110	69	18	14.5	17	4	19.25
W1 - 8		T7609789	36	110	69	20	16	19	4	22
W1-1/8 - 7		T7609829	40	125	77	22	18	21	4	24.75
W1-1/4 - 7		T7609869	40	125	77	25	20	23	4	27.75
W1-3/8 - 6		T7609909	50	150	88	28	22	25	4	30.5
W1-1/2 - 6		T7609949	50	150	88	32	24	27	4	33.5
W1-5/8 - 5		T7609B29	56	150	88	32	24	27	4	35.5
W1-3/4 - 5		T7609B89	58	160	93	36	29	32	4	39
W1-7/8 - 4½		T7609C69	65	180	102	36	29	32	4	41.5
W2 - 4½		T7609D29	65	180	102	40	32	35	4	44.5

[illegible]







# M ISO metric coarse threads DIN 13



Metrisches ISO-Gewinde DIN 13

ISO MÉTRIQUE DIN13

ISO Metrico passo grosso DIN 13

- This tap is a serial hand tap in set, First, Second and Bottoming.  
► Bottoming tap of set has final internal thread dimensions only..

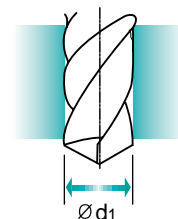
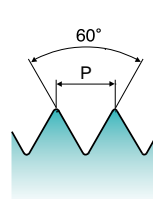
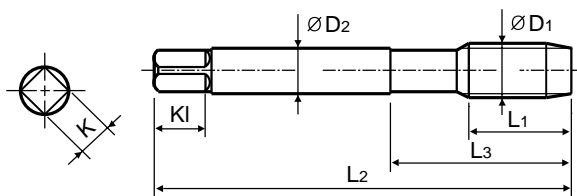
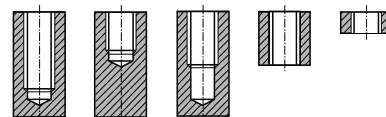
- Dies ist ein Handgewindebohrer im Satz mit Vor-, Mittel- und Fertigschneider.

- Nur der Fertigschneider kann das gewünschte Gewinde schneiden.



Hole type

2.0xD



HSS-E

DIN  
352

6H



Bright

Sets of taps  
Gewindebohrer-Satz

Unit : mm

SIZE	Pitch	EDP No.	Thread Length	Overall Length	Neck Length	Shank Diameter	Square Size	Square Length	No. of Flute	Tapping Drill Diameter
ØD1	P	Bright	L1	L2	L3	ØD2	K	KI	Z	Ød1
M3	× 0.5	TC353209	11	40	18	3.5	2.7	6	3	2.5
M3.5	× 0.6	TC353229	13	45	21	4	3	6	3	2.9
M4	× 0.7	TC353249	13	45	21	4.5	3.4	6	3	3.3
M4.5	× 0.75	TC353269	16	50	25	6	4.9	8	3	3.7
M5	× 0.8	TC353289	16	52	26	6	4.9	8	3	4.2
M6	× 1	TC353319	18	56	27	6	4.9	8	3	5
M8	× 1.25	TC353369	20	63	34	6	4.9	8	3	6.8
M10	× 1.5	TC353429	22	70	38	7	5.5	8	4	8.5
M12	× 1.75	TC353509	24	80	45	9	7	10	4	10.2
M14	× 2	TC353549	26	80	45	11	9	12	4	12
M16	× 2	TC353609	27	80	45	12	9	12	4	14
M18	× 2.5	TC353659	30	95	58	14	11	14	4	15.5
M20	× 2.5	TC353709	32	95	58	16	12	15	4	17.5

- First with pilot guide

◎ : Excellent ○ : Good

ISO	P										M				K								
Material Description	Non-alloy steel					Low alloy steel				High alloyed steel, and tool steel		Stainless steel			Grey cast iron		Nodular cast iron		Malleable cast iron				
VDI 3323	1	2	3	4	5	6	7	8	9	10	11	12	13	14	15	16	17	18	19	20			
HRc		13	25	28	32	10	29	32	38	15	35	15	23	10	10	26	3	25		21			
HB	125	190	250	270	300	180	275	300	350	200	325	200	240	180	180	260	160	250	130	230			
Recommended	○	○	○	○		○	○																
ISO	N										S						H						
Material Description	Aluminum-wrought alloy		Aluminum-cast, alloyed			Copper and Copper Alloys (Bronze / Brass)			Non Metallic Materials		Heat Resistant Super Alloys					Titanium Alloys		Hardened steel		Chilled Cast iron		Hardened Cast iron	
VDI 3323	21	22	23	24	25	26	27	28	29	30	31	32	33	34	35	36	37	38	39	40	41		
HRc											15	30	25	38	34			55	60	42	55		
HB	60	100	75	90	130	110	90	100			200	280	250	350	320	400Rm	1050Rm	550	630	400	550		
Recommended																							